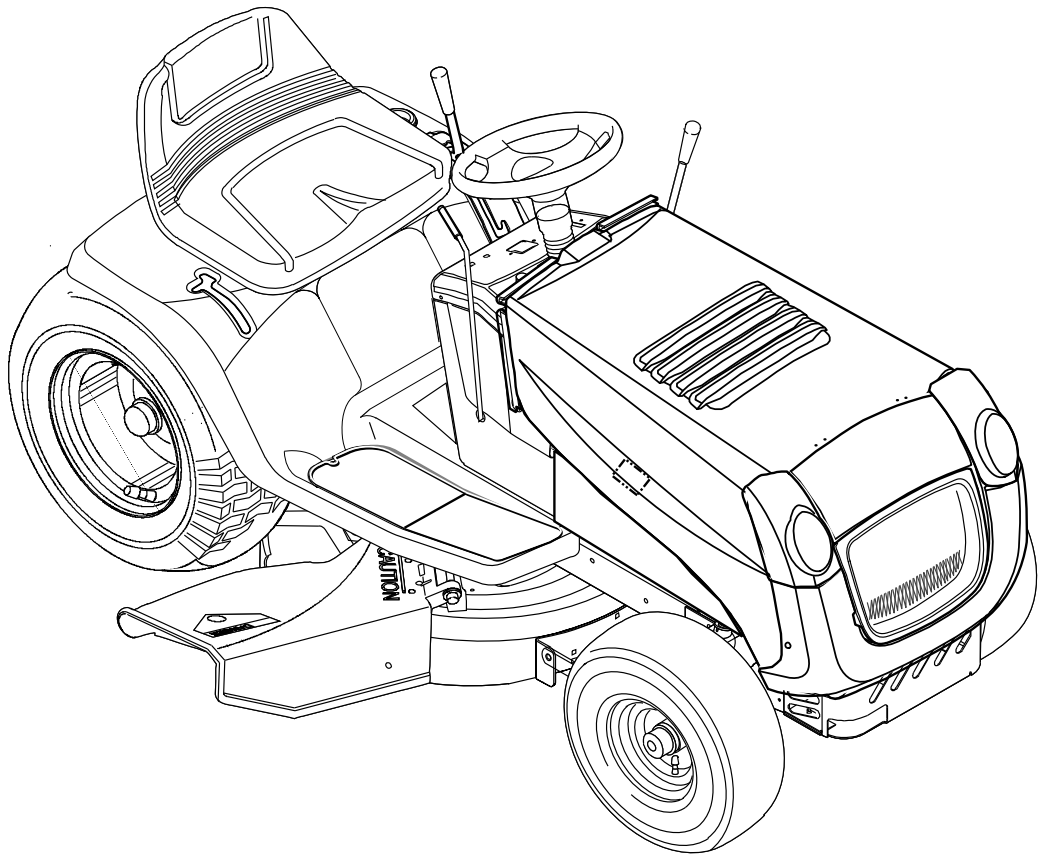




Parts List

Model
7800278



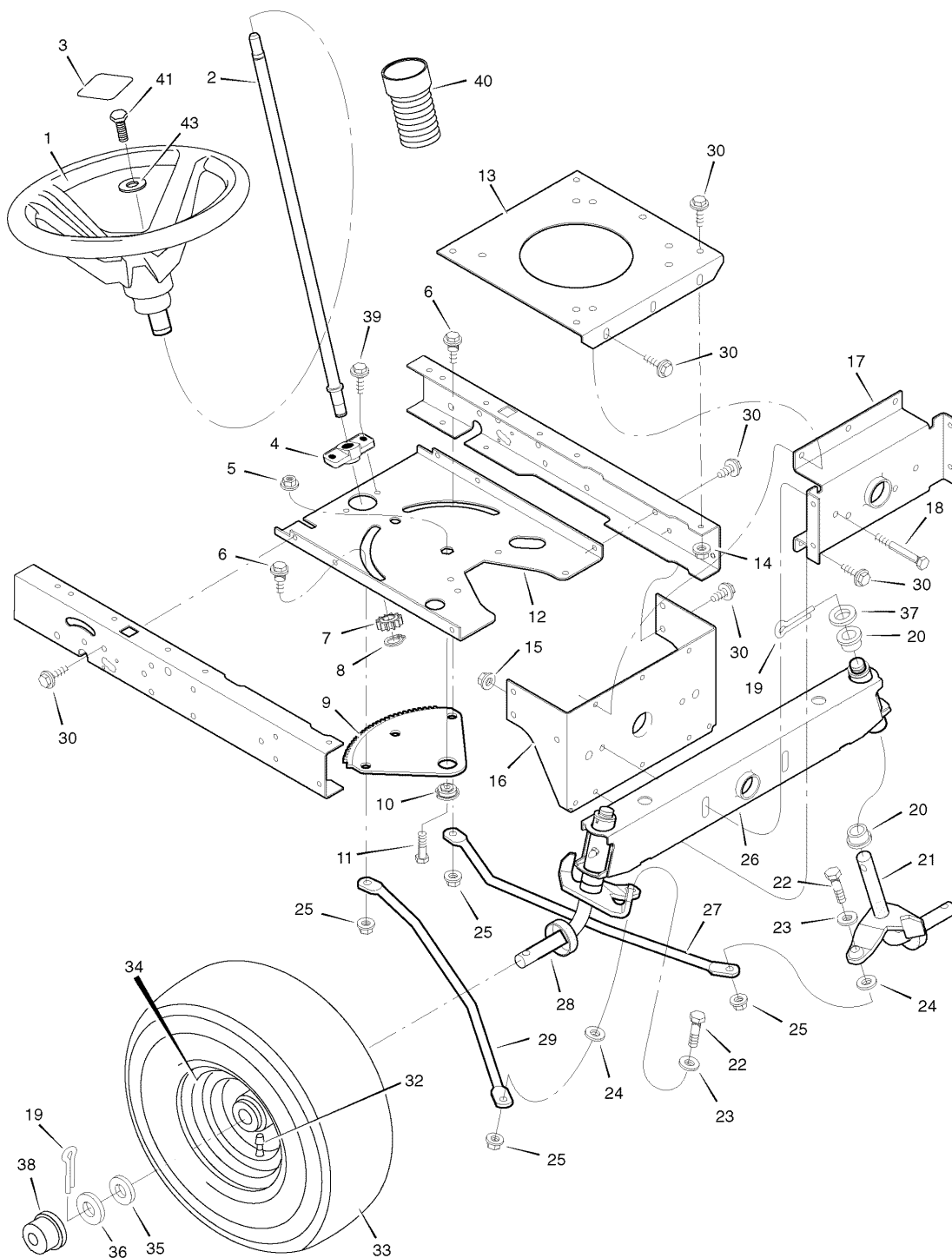
7102025
Revision 01
Rev. Date 03/2008
TP 400-4885-01-LT-R

PRODUCT COMPONENTS	PAGES
Steering	4
Engine Mount	6
Motion Drive	8
Electrical System	12
Chassis & Hood	14
Decals	18
Mower Housing	20
Mower Housing Suspension	24
Torque Specification Chart	Inside Back Cover

Steering

0007

NOTE: Unless noted otherwise,
use the standard hardware torque
specification chart.



The above parts group applies to the following Mfg. Nos.:
7800278 - 405021x114 Lawn Tractor (2008)

Steering

REF NO	PART NO.	DESCRIPTION
1	095185MA	WHEEL, Steering
2	690625MA	POST, Steering
3	711326MA	COVER, Steering Wheel
4	094124MA	Bearing (Included with Ref. No. 2)
5	15x111MA	Nut, Flange **
6	009x57MA	BOLT, Shoulder
7	1001893MA	GEAR, Pinion **
8	011x25MA	Ring, Snap **
9	094121MA	GEAR, Sector
10	094123MA	BEARING
11	7027168SM	BOLT
12	7300867ZMA	PLATE, Steering
13	7300863ZMA	PLATE, Engine
14	015x88MA	NUT, Flange
15	15x118MA	NUT, Flange
16	7300751ZMA	BRACKET, Hanger
17	7300742ZMA	AXLE, Hanger
18	01x146MA	BOLT
19	030x49MA	PIN, Cotter
20	690150MA	BEARING
21	7400232ZMA	SPINDLE ASSEMBLY, Left
22	01x111MA	BOLT
23	710083MA	WASHER
24	017x53MA	WASHER
25	7091619SM	NUT, Flange
26	7500692ZMA	AXLE ASSEMBLY
27	7101805ZMA	DRAG LINK, Left
28	7400231ZMA	SPINDLE ASSEMBLY, Right
29	7101806ZMA	DRAG LINK, Right
30	26x249MA	SCREW
32	024373MA	STEM, Valve
33	091912MA	Tire *
--	407924MA	TUBE
34	7101798MA	WHEEL & TIRE ASSEMBLY
35	17x195MA	WASHER
36	17x192MA	WASHER
37	1733001SM	WASHER
38	094618MA	HUB CAP
39	26x267MA	SCREW
40	092059MA	BELLOWS
41	0025x3MA	SCREW, Hex
43	17x146MA	WASHER

Footnotes

Note* When you order a tire, make sure to give the brand name of the tire so that the tread pattern on the tire will match.

Note** This part included when ordering Ref. No. 2.

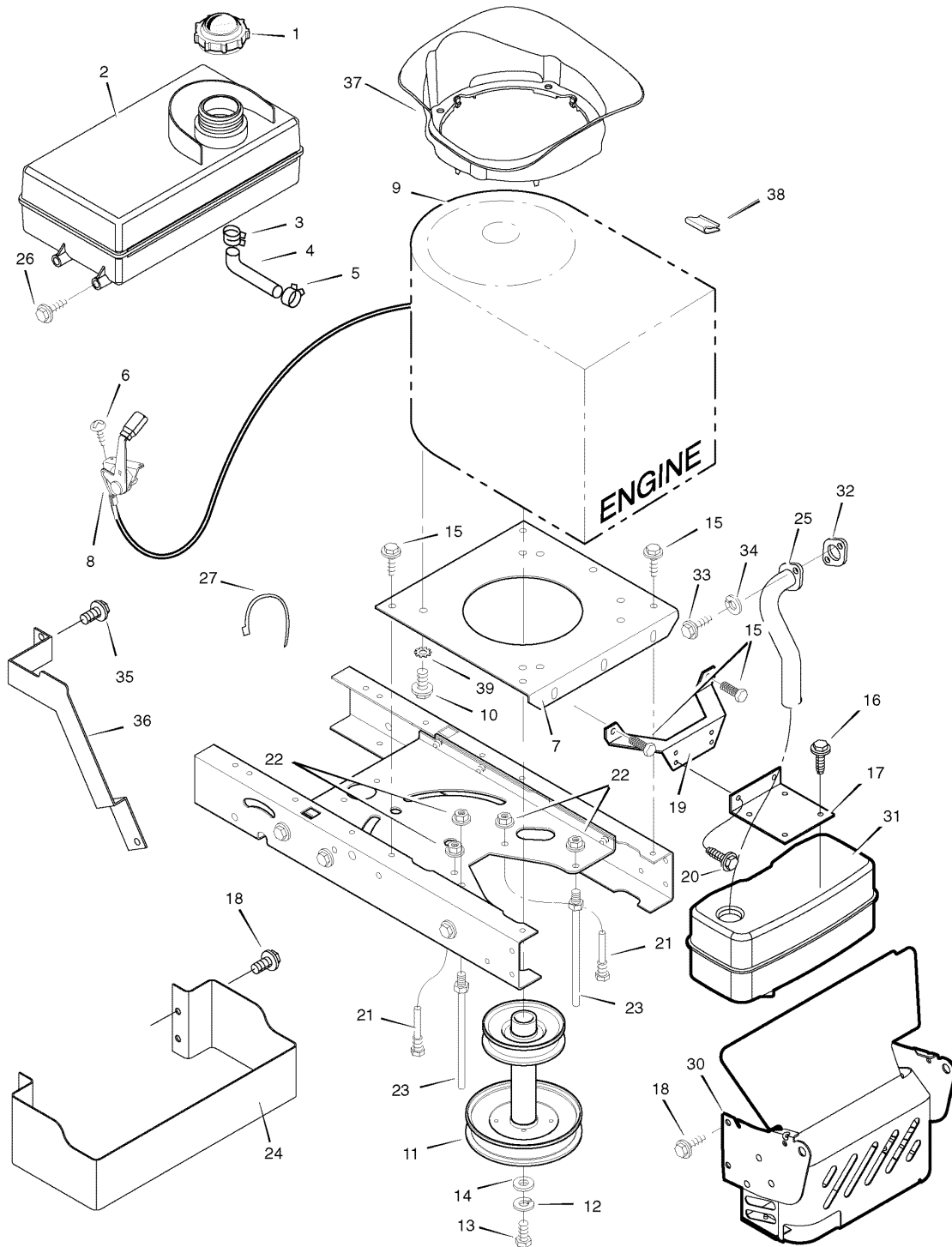
The above parts group applies to the following Mfg. Nos.:

7800278 - 405021x114 Lawn Tractor (2008)

Engine Mount

0013

NOTE: Unless noted otherwise,
use the standard hardware torque
specification chart.



The above parts group applies to the following Mfg. Nos.:
7800278 - 405021x114 Lawn Tractor (2008)

Engine Mount

REF NO	PART NO.	DESCRIPTION
1	092317MA	Fuel Cap (Included with Ref. No. 2)
2	7601092MA	TANK, Fuel 1.4 Gal.
3	095197MA	Hose Clamp (Included with Ref. No. 2)
4	7601033MA	Fuel Line (Must cut to length) (Included with Ref. No. 2)
5	095197MA	Hose Clamp (Included with Ref. No. 2)
6	26x201MA	SCREW
7	7300863ZMA	PLATE, Engine
8	092371MA	THROTTLE CONTROL
9	-----	ENGINE, Briggs & Stratton * (Model: 31A6070138B1)
10	0025x7MA	BOLT, Engine Mount
11	690439MA	STACK PULLEY ASSEMBLY
12	019x35MA	LOCKWASHER
13	01x140MA	BOLT, Hex
14	17x170MA	WASHER
15	26x249MA	SCREW
16	26x229MA	SCREW
17	7300760AMA	BRACKET, Muffler
18	26x277MA	SCREW
19	7300817ZMA	BRACKET, Muffler Mount
20	26x213MA	SCREW
21	094384MA	GUIDE, Belt
22	7090585MA	NUT, Flange
23	094066MA	GUIDE, Belt
24	7300783AMA	GUARD, Heat Shield
25	1001496MA	EXHAUST TUBE, Single
26	26x253MA	SCREW
27	032618MA	TIE, Strap, 5.38 Long
30	7500710AMA	SHIELD, Heat
31	094654MA	MUFFLER
32	692236	GASKET
33	06x103MA	SCREW
34	018x15MA	WASHER
35	06x104MA	BOLT, Washer Hex Head
36	1001880E701MA	GUARD, Exhaust Pipe
37	1001587MA	PLENUM, X1 M28/31
39	0019x8MA	WASHER, 3/8-5/8 Star
40	055939MA	CLIP, Wire Adhesive

Footnotes

Note* For information on Replacement Parts for this engine contact the manufacturer.

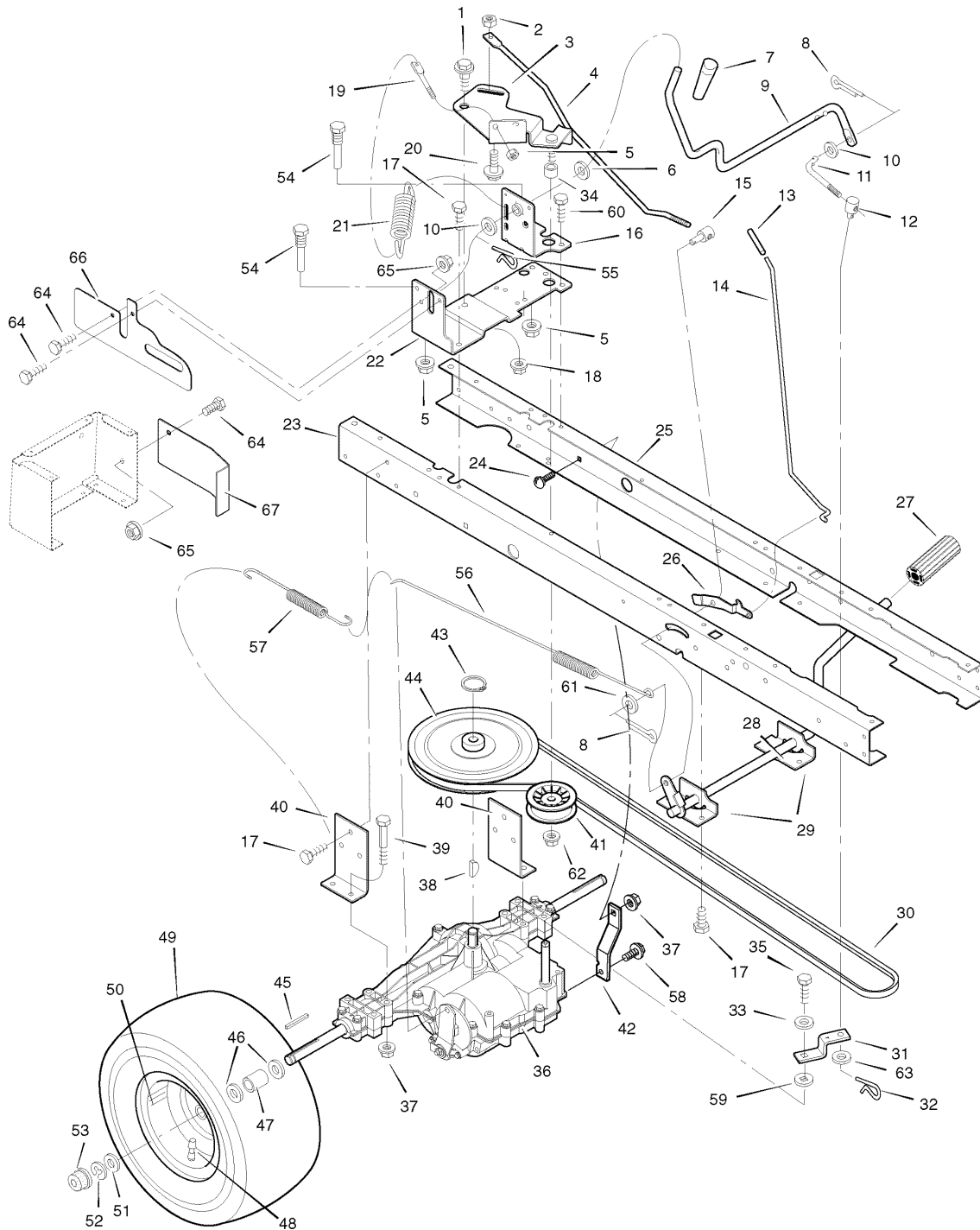
The above parts group applies to the following Mfg. Nos.:

7800278 - 405021x114 Lawn Tractor (2008)

Motion Drive

0005

NOTE: Unless noted otherwise,
use the standard hardware torque
specification chart.



The above parts group applies to the following Mfg. Nos.:
7800278 - 405021x114 Lawn Tractor (2008)

Motion Drive

REF NO	PART NO.	DESCRIPTION
1	009x39MA	BOLT, Shoulder
2	015x89MA	NUT, Hex
3	7400241MA	ARM, Idler
4	094041ZMA	ROD, Clutch
5	7090585MA	NUT
6	17x102MA	WASHER
7	1741756MA	GRIP
8	030x20MA	PIN, Cotter
9	094043ZMA	LEVER, Shift
10	017x47MA	WASHER
11	094044ZMA	LINK, Shift
12	021920ZMA	NUT, Adjuster
13	1741757MA	GRIP
14	1001245ZMA	ROD, Parking Brake
15	094815ZMA	NUT, Adjuster
16	1001303ZMA	BRACKET, Shift Pivot
17	26x249MA	SCREW
18	015X84MA	NUT
19	094042ZMA	MOUNT, Stud Spring
20	009x54MA	BOLT, Shoulder
21	165x116MA	SPRING, Extension
22	7300824ZMA	BRACKET, Right Shifter
23	7300870ZMA	FRAME, Right
24	002x53MA	BOLT, Carriage
25	7300869ZMA	FRAME, Left
26	094045ZMA	LATCH, Parking Brake
27	021544MA	PEDAL
28	7400256ZMA	LEVER, Brake/Clutch
29	1001117E701MA	BRACKET, Pedal
30	7101749MA	BELT, Motion Drive
31	094031ZMA	YOKE, Shift
32	0031x6MA	PIN, Hair
33	017x38MA	WASHER
34	690369MA	SPACER
35	06x105MA	BOLT
36	-----	Transaxle **
37	015x88MA	NUT
38	020697MA	KEY, Woodruff
39	01x155MA	BOLT
40	7300769ZMA	BRACKET, Transaxle
41	690409MA	PULLEY
42	7300845ZMA	BRACKET, Torque Strap, LH
43	0011x7MA	RING RETAINER

Footnotes

Note* When you order a tire, make sure to give the brand name of the tire so that the tread pattern on the tire will match.

Note** For Replacement Parts see the Transaxle manufacturer.

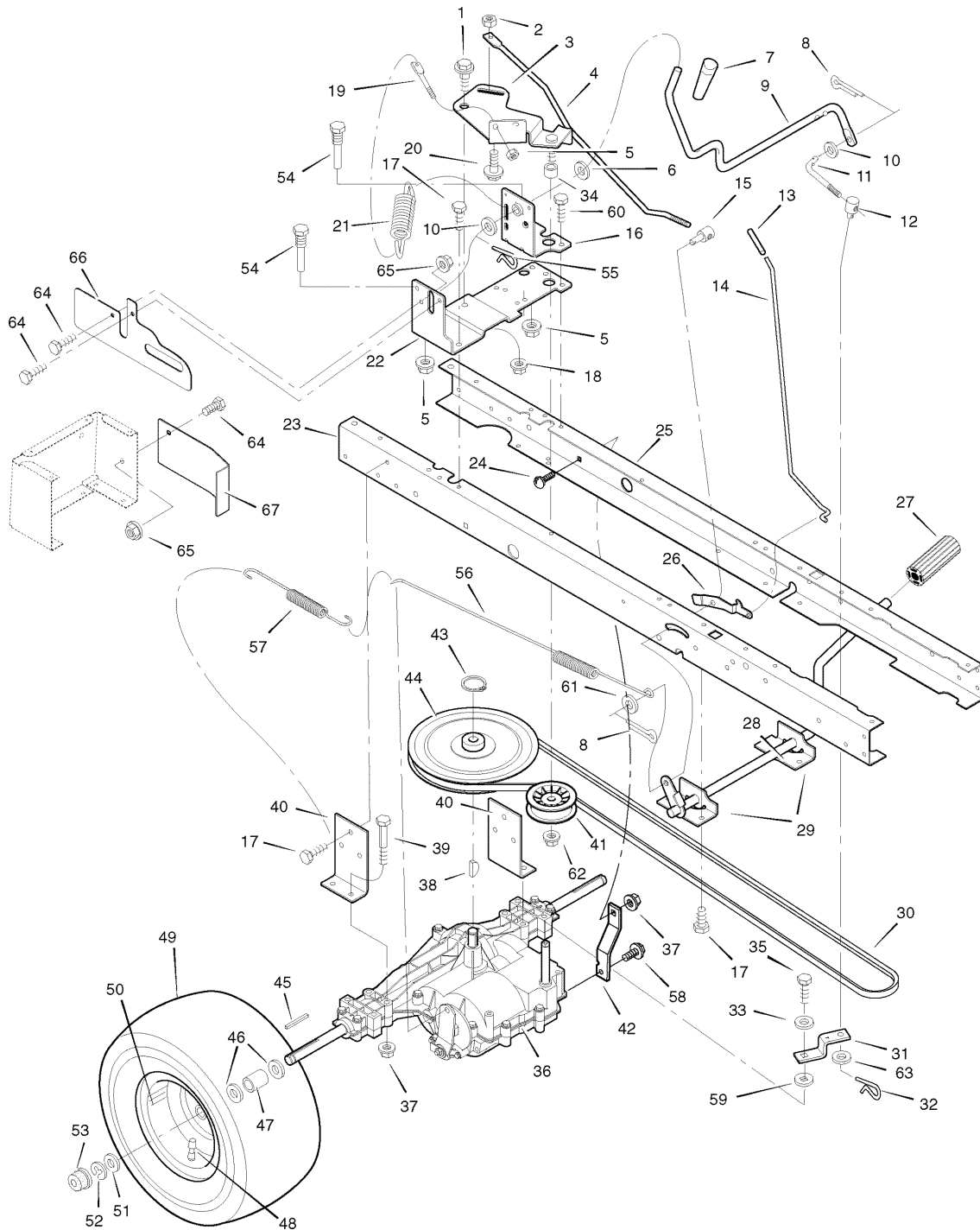
The above parts group applies to the following Mfg. Nos.:

7800278 - 405021x114 Lawn Tractor (2008)

Motion Drive

0005

NOTE: Unless noted otherwise,
use the standard hardware torque
specification chart.



The above parts group applies to the following Mfg. Nos.:
7800278 - 405021x114 Lawn Tractor (2008)

Motion Drive

REF NO	PART NO.	DESCRIPTION
44	095094MA	PULLEY Drive
45	021553MA	KEY, Square
46	17x160MA	WASHER
47	1401103MA	SPACER, Transaxle
48	024373MA	STEM, Valve
49	091923MA	Tire *
--	407049MA	TUBE (Not Illustrated)
50	092288601MA	WHEEL & TIRE ASSEMBLY
51	17x195MA	WASHER
52	0011x3MA	E-Ring
53	094618MA	HUB CAP
54	093349MA	GUIDE, Belt
55	0031x4MA	PIN, Hair
56	165x115MA	SPRING, Extension
57	165x92MA	SPRING, Extension
58	26x216MA	SCREW
59	17x148MA	WASHER
60	26x267MA	SCREW
61	17x169MA	WASHER
62	015x98MA	NUT, Hex
63	017x45MA	WASHER
64	01x121MA	CAPSCREW, Hex Head, 1/4-20 x 3/4
65	015x82MA	NUT, Hex Flange, 1/4-20
66	1735564ZMA	GUARD PLATE, RH, GEAR DRIVE
67	1735563ZMA	GUARD PLATE, LH, GEAR DRIVE

Footnotes

Note* When you order a tire, make sure to give the brand name of the tire so that the tread pattern on the tire will match.

Note** For Replacement Parts see the Transaxle manufacturer.

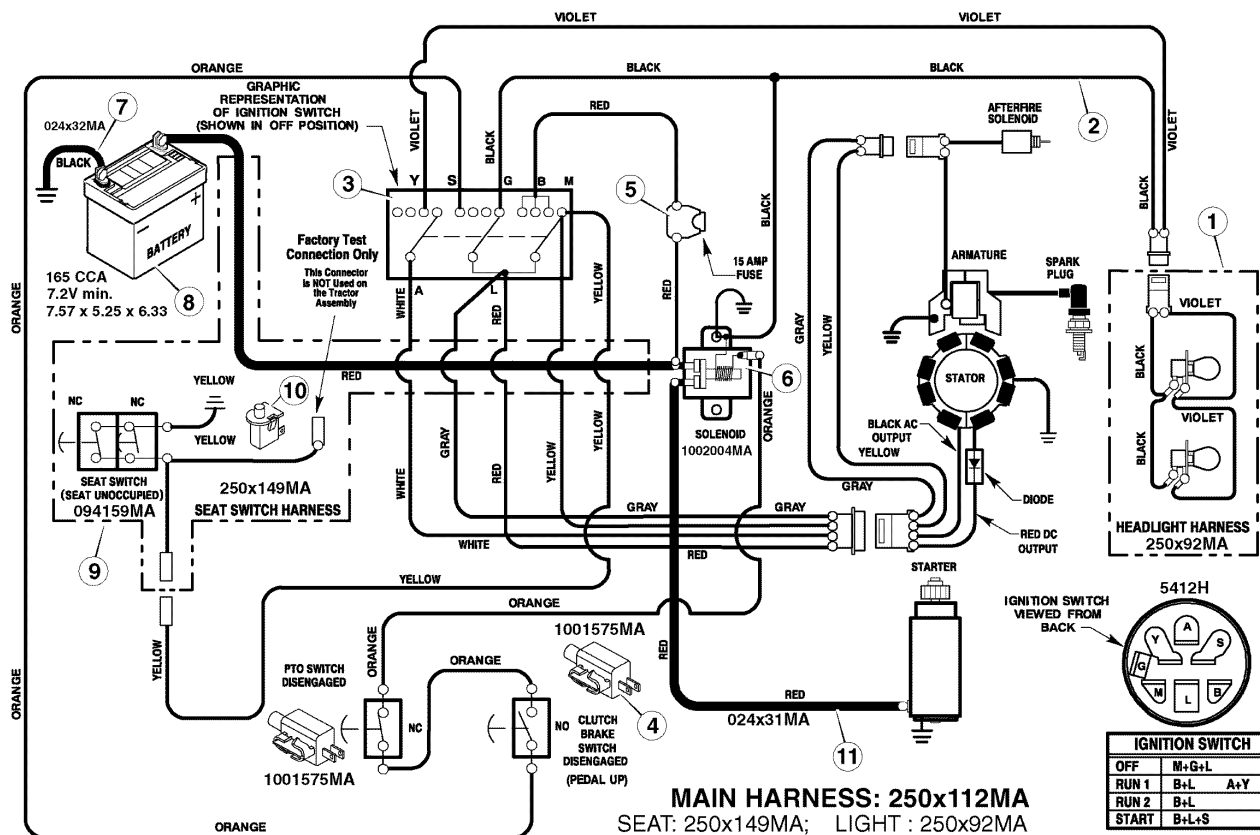
The above parts group applies to the following Mfg. Nos.:

7800278 - 405021x114 Lawn Tractor (2008)

Electrical System

NOTE: Unless noted otherwise, use the standard hardware torque specification chart.

0021



The above parts group applies to the following Mfg. Nos.:
7800278 - 405021x114 Lawn Tractor (2008)

Electrical System

REF NO	PART NO.	DESCRIPTION
1	250x92MA	HARNESS, Light Wire
--	1001716MA	SOCKET, Light
--	090084MA	BULB, Light
2	250x112MA	HARNESS, Chassis Wire
3	5412H	SWITCH, Ignition
--	020729MA	KEY, Ignition
--	091489MA	NUT, Hex
--	091488MA	CAP, Ignition
4	1001575MA	SWITCH, Limit
5	302031MA	FUSE
--	407078MA	HOLDER, Fuse
6	1002004MA	SOLENOID
--	26x229MA	SCREW, Mounting
--	15x116MA	LOCKNUT
7	024x32MA	CABLE, Battery Ground
--	26x229MA	SCREW, Ground Cable
8	-----	BATTERY 165 CCA 7.2V min. 7.57 x 5.25 x 6.33
--	002x82MA	BOLT, Carriage
--	014x79MA	WINGNUT
--	690604MA	BOOT, Battery Terminal, Positive
9	250x149MA	HARNESS, Seat Switch Wire
10	094159MA	SWITCH, Seat Sensor
11	024x31MA	CABLE

Footnotes

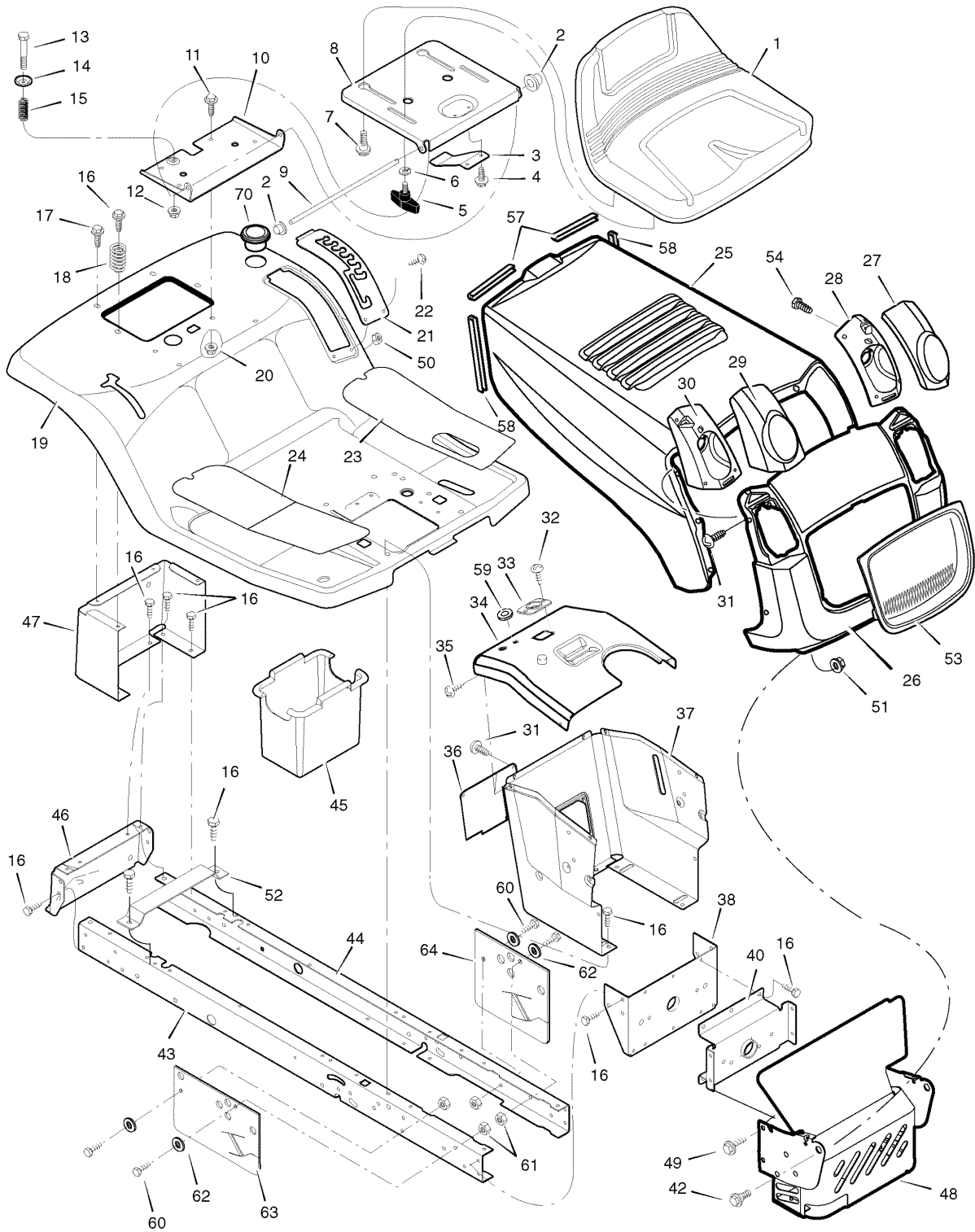
The above parts group applies to the following Mfg. Nos.:

7800278 - 405021x114 Lawn Tractor (2008)

Chassis & Hood

0003

NOTE: Unless noted otherwise,
use the standard hardware torque
specification chart.



The above parts group applies to the following Mfg. Nos.:
7800278 - 405021x114 Lawn Tractor (2008)

Chassis & Hood

REF NO	PART NO.	DESCRIPTION
1	094161MA	SEAT
2	028x23MA	CAP, Push On
3	094057MA	SPRING
4	26x229MA	SCREW
5	1001054MA	BOLT, Wing
6	017X47MA	WASHER
7	009x56MA	BOLT, Shoulder
8	7300875BFMA	SUPPORT, Seat
9	094156ZMA	ROD, Pivot
10	7300794BFMA	BRACKET, Seat Pivot
11	001x45MA	BOLT
12	015x89MA	NUT
13	009x55MA	BOLT, Shoulder
14	094155ZMA	WASHER, Cup
15	164x31MA	SPRING
16	26x249MA	SCREW
17	26x263MA	SCREW
18	164x30MA	SPRING
19	7300843BFMA	DECK, Seat
20	15x123MA	NUT
21	7300839BFMA	PLATE, Lift
22	009x49MA	SCREW
23	094999MA	MAT, Left
24	094998MA	MAT, Right
25	1001538E245MA	HOOD, X3
26	7300780BFMA	GRILLE, X1/X3
27	1001546MA	LENS, Left
28	1001548MA	HOUSING, Left Headlamp
29	1001545MA	LENS, Right
30	1001547MA	Housing, Right Headlamp
31	26x270MA	SCREW
32	26x238MA	SCREW
33	1001491MA	BEARING, Steering
34	7300774ZMA	DASH
35	26x201MA	SCREW
36	7300750ZMA	PANEL, Access
37	7300872ZMA	SUPPORT, Dash
38	7300751ZMA	BRACKET, Rear Hanger
40	7300742ZMA	AXLE, Hanger
42	009x58MA	BOLT, Shoulder
43	7300870ZMA	FRAME, Right
44	7300869ZMA	FRAME, Left
45	690424MA	Container, Battery

Footnotes

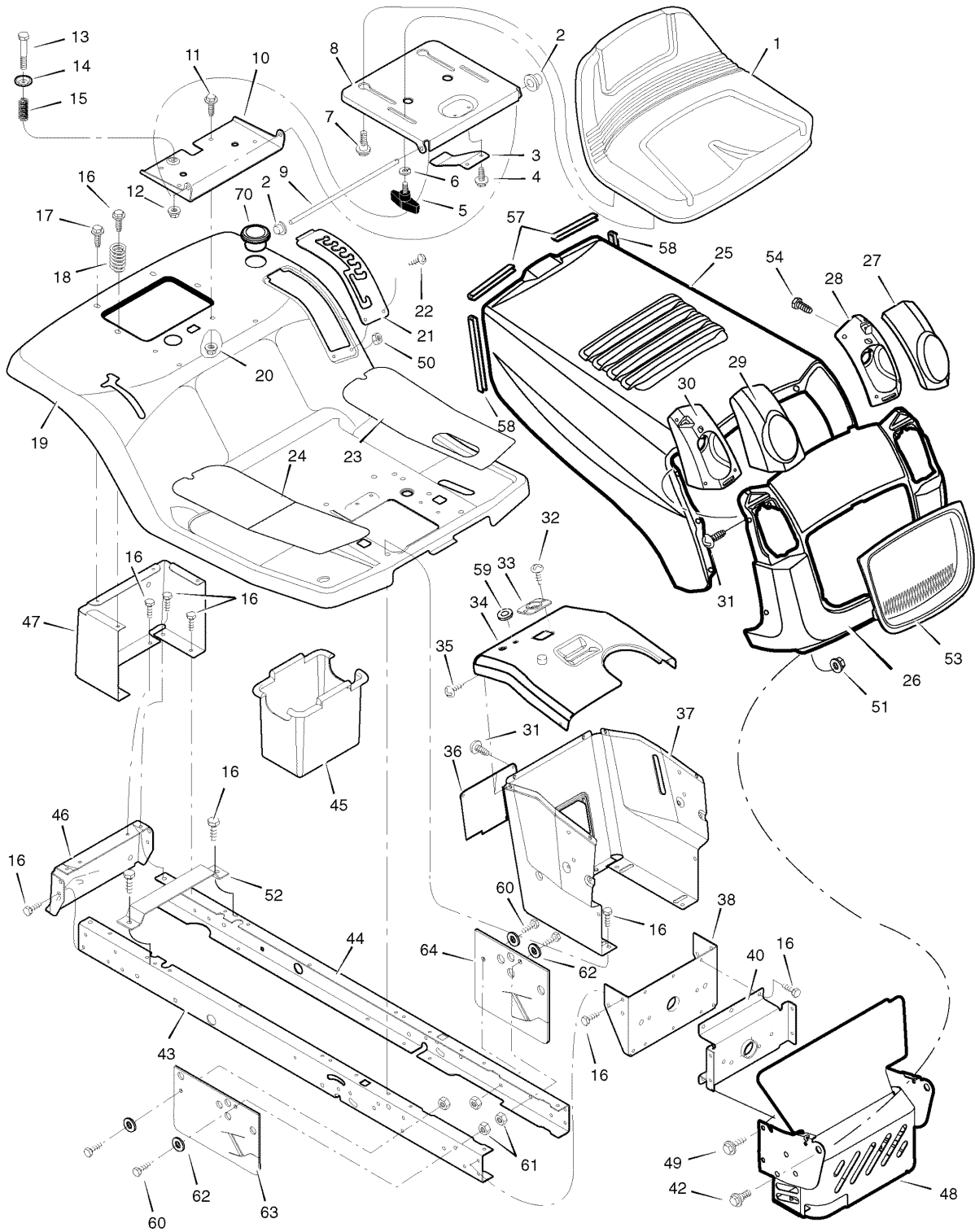
The above parts group applies to the following Mfg. Nos.:

7800278 - 405021x114 Lawn Tractor (2008)

Chassis & Hood

0003

NOTE: Unless noted otherwise,
use the standard hardware torque
specification chart.



The above parts group applies to the following Mfg. Nos.:
7800278 - 405021x114 Lawn Tractor (2008)

Chassis & Hood

REF NO	PART NO.	DESCRIPTION
46	7300864ZMA	PLATE, Hitch
47	7300832ZMA	PANEL, Rear
48	7500710AMA	SHIELD, Heat
49	26x277MA	SCREW
50	015x81MA	NUT
51	015x84MA	NUT
52	7300741ZMA	SUPPORT, Battery
53	1001541MA	INSERT, Grille
54	26x259MA	SCREW, Hex Head
57	1001652MA	TRIM, Hood (3.75")
58	1001653MA	TRIM, Hood (6.5")
59	1001755MA	GROMMET, Parking Brake
60	001x84MA	CAPSCREW, Hex Head
61	15x123MA	NUT, Hexlock
62	017x45MA	WASHER
63	1735615MA	GUARD, Rubber, RH, Black
64	1735621MA	GUARD, Rubber, LH, Black
70	1001542MA	HOLDER, Cup
--	1002050MA	BAG, Parts
--	7102024	INSTRUCTION BOOK
--	7102025	MANUAL, Parts List

Footnotes

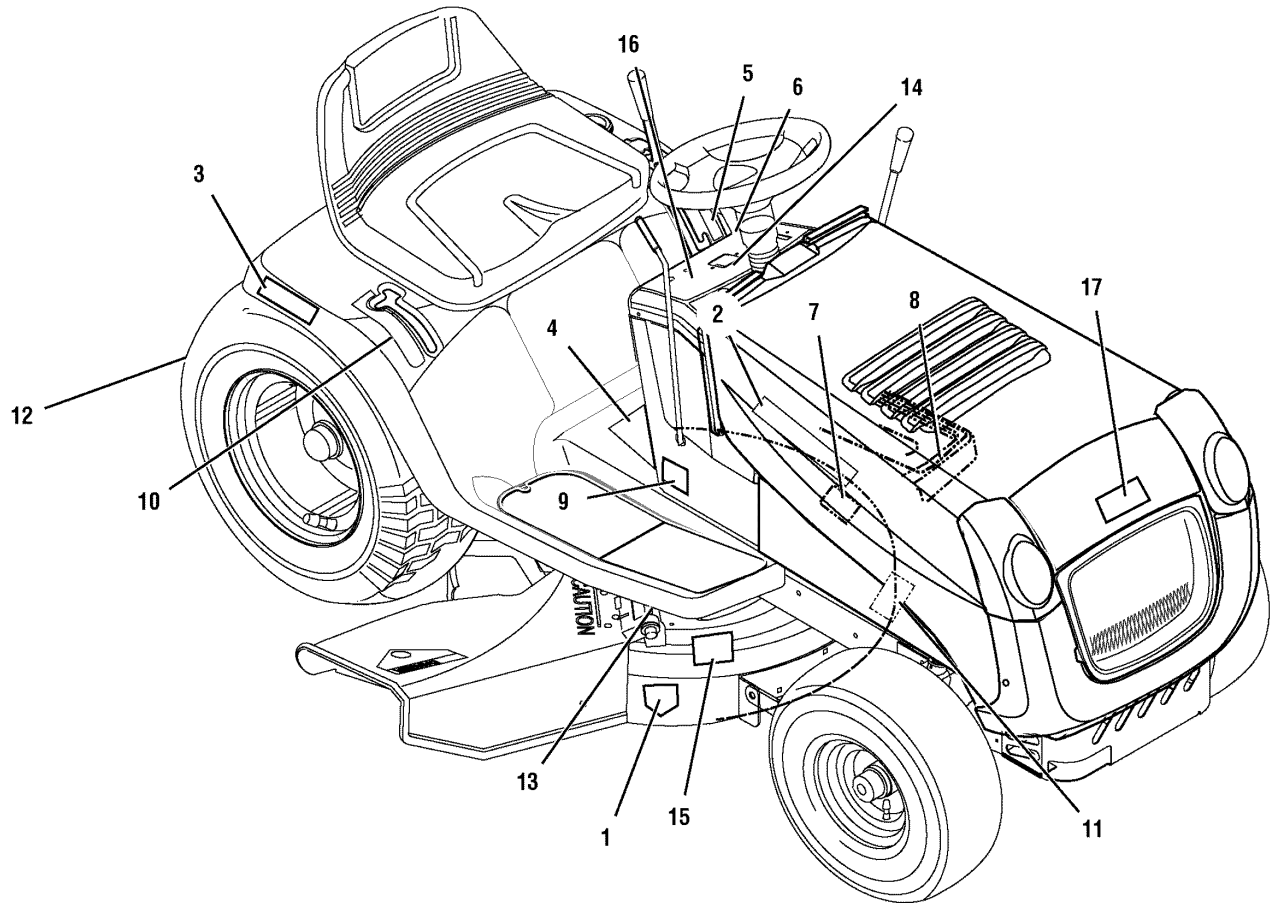
The above parts group applies to the following Mfg. Nos.:

7800278 - 405021x114 Lawn Tractor (2008)

Decals

NOTE: Unless noted otherwise,
use the standard hardware torque
specification chart.

0023



The above parts group applies to the following Mfg. Nos.:

7800278 - 405021x114 Lawn Tractor (2008)

Decals

REF NO	PART NO.	DESCRIPTION
1	48X4033MA	DECAL, Cut Finger Symbols
2	7101916MA	DECAL, Performer R.H. & L.H.
3	7102022YP	DECAL, 15.5/102 R.H. & L.H.
4	48X4032MA	DECAL, Warning Export
5	44X7026MA	DECAL, 7 Position Cut Height
6	44X7027MA	DECAL, Deck Level
7	48X4034MA	DECAL, No Step Export
8	44X5437MA	DECAL, Brake/Clutch Export
9	44X6277MA	DECAL, B&S Logo
10	7101917MA	DECAL, 5 Speed
11	44X5936MA	DECAL, Heat Shield Warning
12	48X511MA	DECAL, Warning Load Limit Export
13	44X6828MA	DECAL, Warning Pinch Point
14	44X6817MA	DECAL, Dash/Symbols X-W Styles
15	48X5911MA	DECAL, 100db Export
16	44x6595MA	DECAL, Gas Gauge
17	7101926MA	DECAL, Beal Hood

Footnotes

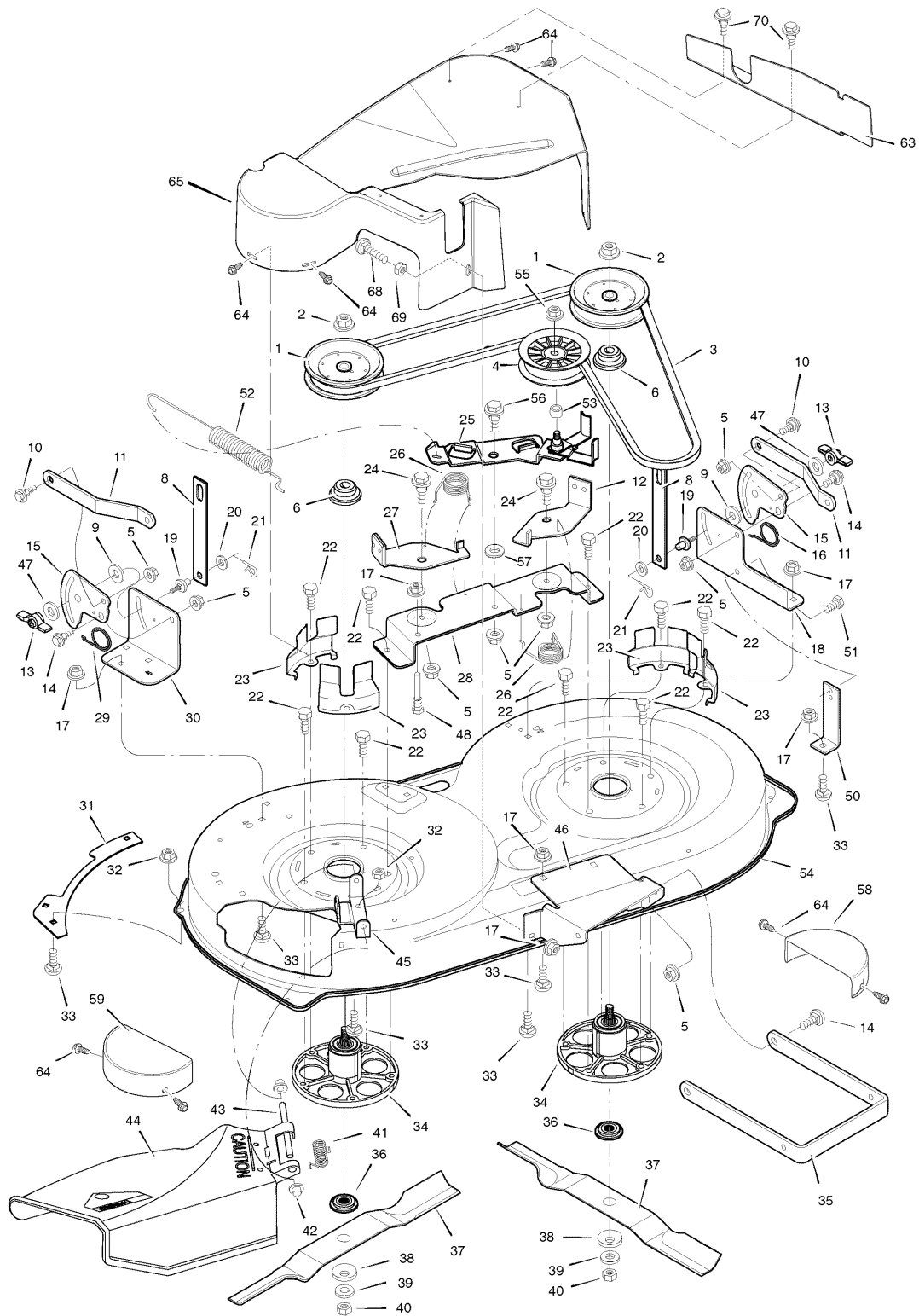
The above parts group applies to the following Mfg. Nos.:

7800278 - 405021x114 Lawn Tractor (2008)

Mower Housing

0009

NOTE: Unless noted otherwise,
use the standard hardware torque
specification chart.



The above parts group applies to the following Mfg. Nos.:
7800278 - 405021x114 Lawn Tractor (2008)

Mower Housing

REF NO	PART NO.	DESCRIPTION
1	092851MA	PULLEY, Jackshaft
2	15x140MA	NUT, Hex
3	037X62MA	BELT, Mower Drive
4	091801MA	PULLEY, Idler
5	015x84MA	NUT, Flange
6	1001197MA	SPACER, Pulley (Included with Ref. No. 34)
8	7300749ZMA	LINK, Lift
9	094137MA	PAD, Friction
10	009x52MA	BOLT, Shoulder
11	7300826ZMA	BRACKET, Suspension
12	094049E701MA	PAD ASSEMBLY, Left Brake
13	094068MA	KNOB
14	009x51MA	BOLT, Shoulder
15	7300878ZMA	PLATE, Suspension
16	166x43MA	SPRING
17	7090585MA	NUT, Flange
18	7300736ZYP	BRACKET, Left Suspension
19	095194MA	PIN, Hanger
20	017x91MA	WASHER
21	0031x4MA	PIN, Cotter
22	0025x6MA	BOLT
23	7300859ZMA	GUIDE, Belt
24	009x39MA	BOLT, Shoulder
25	1001500MA	ARM, Idler
26	166x41MA	SPRING
27	7400243ZMA	PAD ASSEMBLY, Right Brake
28	7300733ZYP	BRACKET ASSEMBLY, Brake
29	166x42MA	SPRING
30	7300739ZYP	BRACKET, Right Suspension
31	7300834ZMA	PLATE
32	015x88MA	NUT, Flange
33	002x53MA	BOLT, Carriage
34	1001200MA	MANDRELL (Includes Ref. No. 6)
35	7300767ZMA	BRACKET, Suspension
36	690411MA	ADAPTER, Blade
37	7101752AMA	BLADE
38	17x166MA	WASHER
39	17x165MA	WASHER
40	15x100MA	NUT
41	0166x4MA	SPRING
42	028x23MA	CAP, Push On
43	094957ZMA	ROD, Pivot
44	094707MA	DEFLECTOR ASSEMBLY

Footnotes

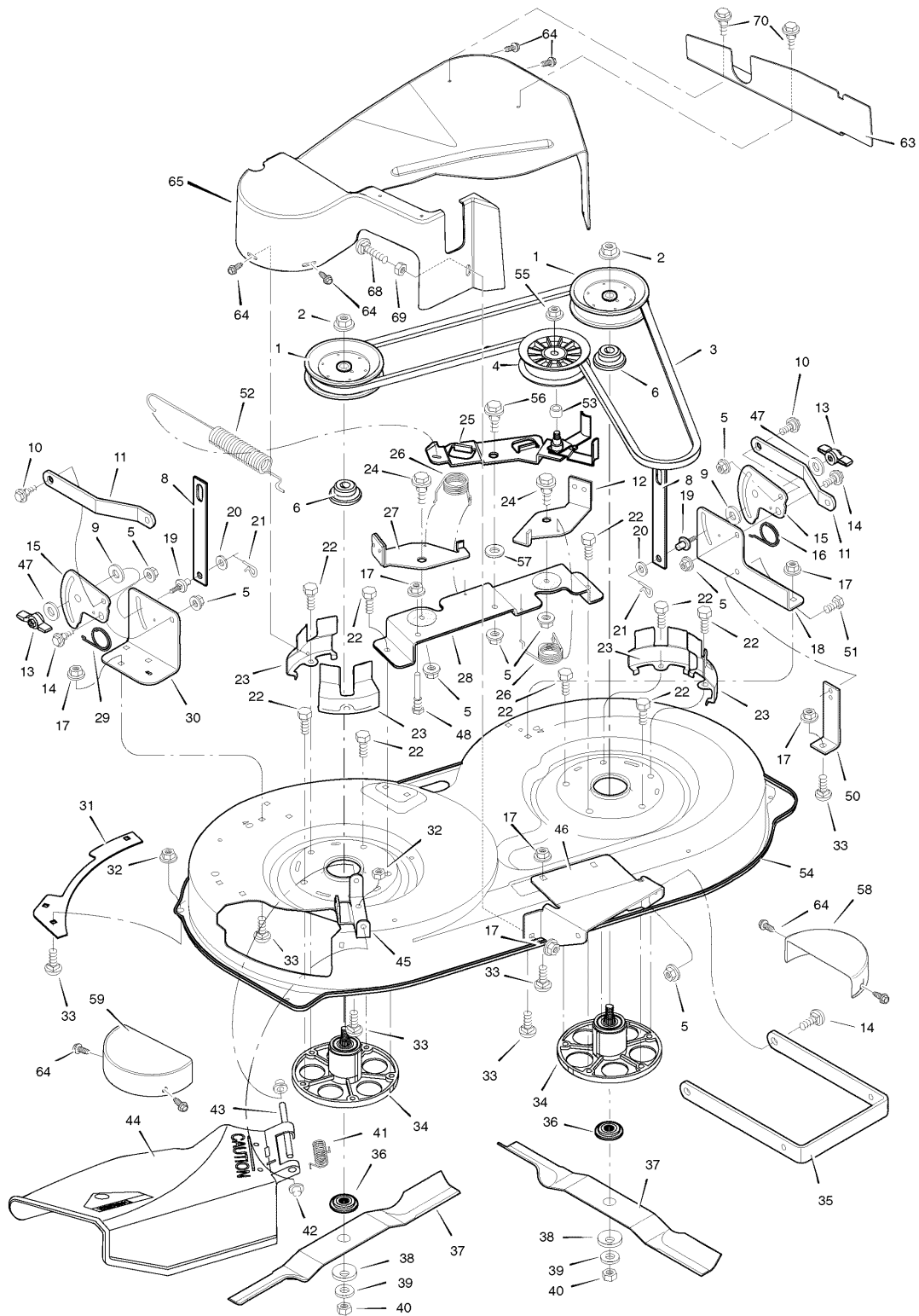
The above parts group applies to the following Mfg. Nos.:

7800278 - 405021x114 Lawn Tractor (2008)

Mower Housing

NOTE: Unless noted otherwise,
use the standard hardware torque
specification chart.

0009



The above parts group applies to the following Mfg. Nos.:
7800278 - 405021x114 Lawn Tractor (2008)

Mower Housing

REF NO	PART NO.	DESCRIPTION
45	7300812ZMA	BRACKET, Deflector
46	7300745ZMA	BRACKET, Front Hanger
47	017x45MA	WASHER
48	094781MA	GUIDE, Belt
50	7300766ZMA	BRACKET, Support
51	26x249MA	SCREW
52	165X119MA	SPRING, Extension
53	690369MA	SPACER
54	7300789ZMA	HOUSING, Export Blade
55	015x98MA	NUT, Flange
56	009x72MA	BOLT, Shoulder
57	17x174ZMA	WASHER
58	7300781ZMA	GUARD, Belt L.H.
59	7300782ZMA	GUARD, Belt R.H.
63	1735565ZMA	PLATE, Guard 40" LH
64	26x263MA	SCREW
65	1735559MA	COVER, Guard
68	002x81MA	BOLT, Carriage, 5/16-18 x 1.50
69	15x123MA	NUT, Hex Lock 3/8-18
70	26x214MA	SCREW HEXHEAD TAP

Footnotes

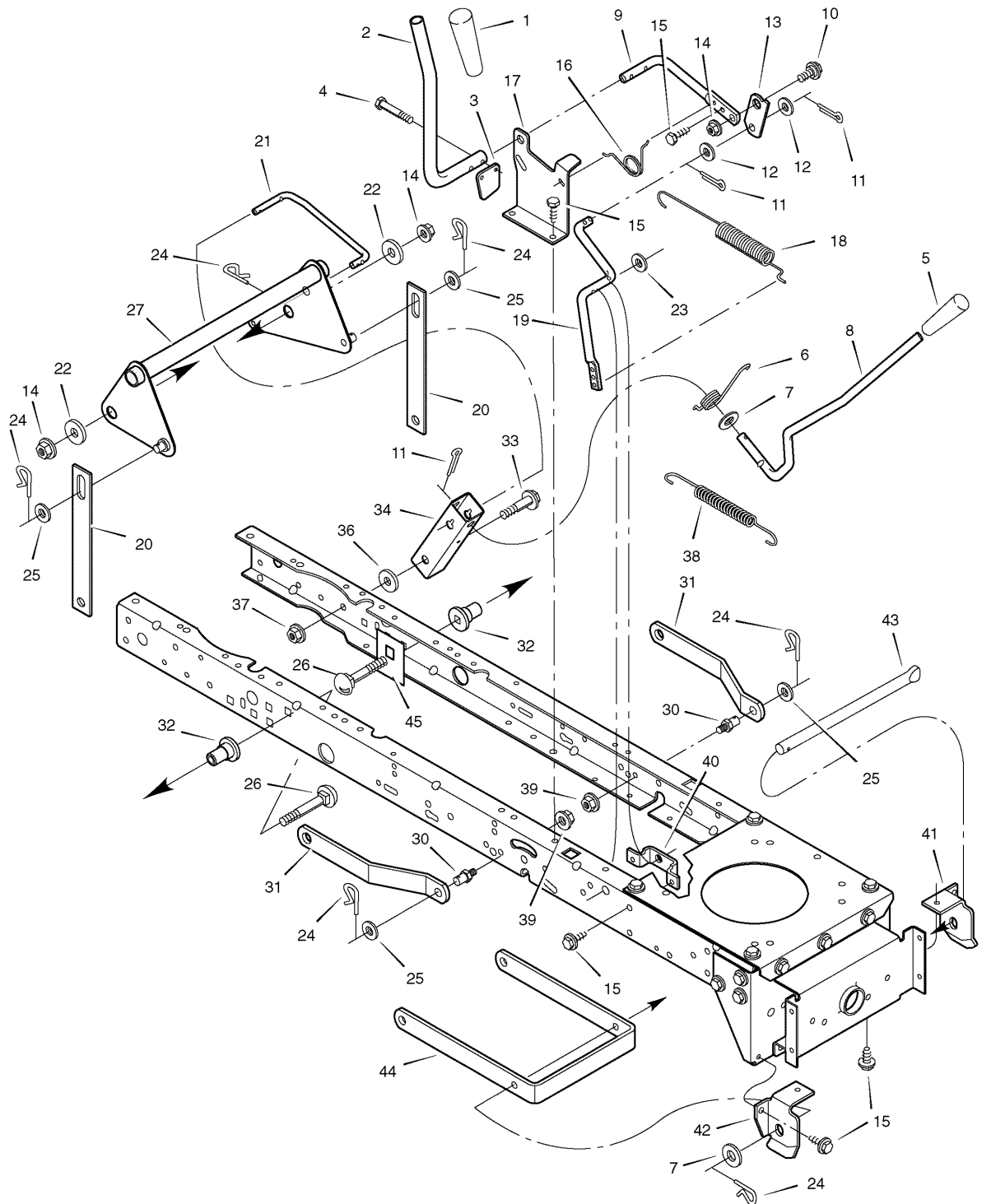
The above parts group applies to the following Mfg. Nos.:

7800278 - 405021x114 Lawn Tractor (2008)

Mower Housing Suspension

0011

NOTE: Unless noted otherwise,
use the standard hardware torque
specification chart.



The above parts group applies to the following Mfg. Nos.:
7800278 - 405021x114 Lawn Tractor (2008)

Mower Housing Suspension

REF NO	PART NO.	DESCRIPTION
1	1741757MA	GRIP
2	094157ZMA	HANDLE, PTO
3	094022ZMA	PAD, Switch
4	0025x3MA	Screw, Hex
5	1741756MA	GRIP
6	166x40MA	SPRING
7	17x103MA	WASHER
8	690533MA	HANDLE, Lift
9	690277MA	LEVER, PTO
10	009x39MA	BOLT, Shoulder
11	030x20MA	PIN, Cotter
12	017x57MA	WASHER
13	094004ZMA	LINK, PTO
14	7091619SM	NUT, Flange
15	26x249MA	SCREW
16	166x39MA	SPRING
17	7300821ZMA	BRACKET, PTO
18	165x119MA	SPRING, PTO
19	7101804YP	CRANK, PTO
20	690212E701MA	LINK, Lift
21	7300877ZMA	LINK, Lift Handle
22	17X168ZMA	WASHER
23	017x57MA	WASHER
24	0031x4MA	PIN, Hair
25	017x91MA	WASHER
26	002x85MA	BOLT, Carriage
27	7500525ZMA	LEVER ASSEMBLY, Lift
30	094067MA	PIN
31	7300826ZMA	BRACKET, Rear Suspension
32	690151MA	SPACER, Lifter
33	009x53MA	BOLT, Shoulder
34	7300819ZMA	BRACKET, Pivot
36	17x191MA	WASHER
37	7091619SM	NUT, Flange
38	165x131MA	SPRING
39	015x68MA	NUT, Flange
40	094005E701MA	BRACKET, PTO
41	094027E701MA	HANGER, Left Deck
42	094026E701MA	HANGER, Right Deck
43	094158ZMA	ROD, Hanger
44	7300767ZMA	BRACKET, Suspension
45	7300868ZMA	PLATE, Stiffening

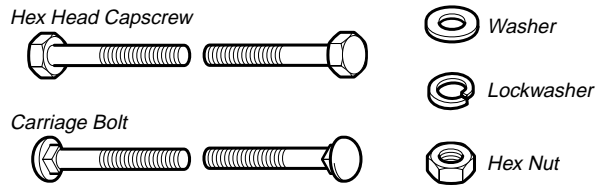
Footnotes

The above parts group applies to the following Mfg. Nos.:

7800278 - 405021x114 Lawn Tractor (2008)

Hardware Identification & Torque Specifications

Common Hardware Types

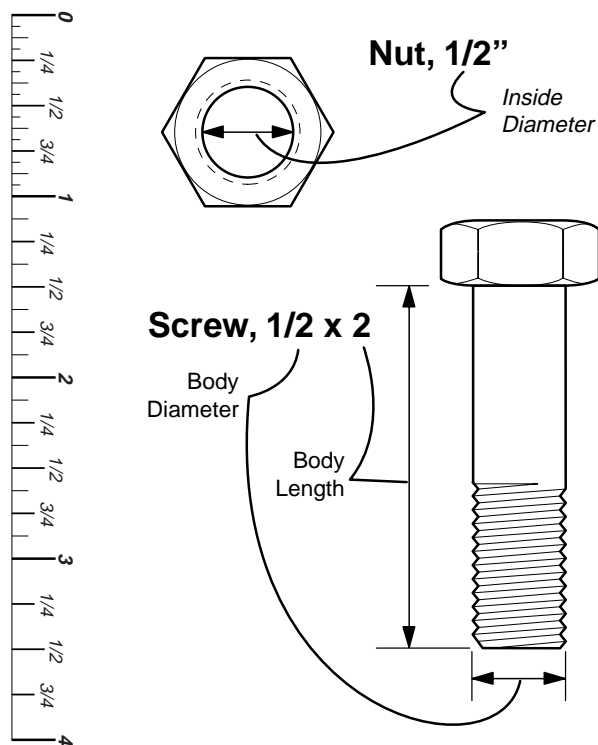


Standard Hardware Sizing

When a washer or nut is identified as **1/2"**, this is the *Nominal size*, meaning the *inside diameter* is 1/2 inch; if a second number is present it represents the *threads per inch*

When bolt or capscrew is identified as **1/2 - 16 x 2"**, this means the *Nominal size*, or *body diameter* is 1/2 inch; the second number represents the *threads per inch* (16 in this example, and the final number is the *body length* of the bolt or screw (in this example 2 inches long).

The guides and ruler furnished below are designed to help you select the appropriate hardware and tools.



Torque Specification Chart

FOR STANDARD MACHINE HARDWARE (Tolerance $\pm 20\%$)

Hardware Grade	No Marks SAE Grade 2		SAE Grade 5		SAE Grade 8	
	in/lbs ft/lbs	Nm.	in/lbs ft/lbs	Nm.	in/lbs ft/lbs	Nm.
8-32	19	2.1	30	3.4	41	4.6
8-36	20	2.3	31	3.5	43	4.9
10-24	27	3.1	43	4.9	60	6.8
10-32	31	3.5	49	5.5	68	7.7
1/4-20	66	7.6	8	10.9	12	16.3
1/4-28	76	8.6	10	13.6	14	19.0
5/16-18	11	15.0	17	23.1	25	34.0
5/16-24	12	16.3	19	25.8	27	34.0
3/8-16	20	27.2	30	40.8	45	61.2
3/8-24	23	31.3	35	47.6	50	68.0
7/16-14	30	40.8	50	68.0	70	95.2
7/16-20	35	47.6	55	74.8	80	108.8
1/2-13	50	68.0	75	102.0	110	149.6
1/2-20	55	74.8	90	122.4	120	163.2
9/16-12	65	88.4	110	149.6	150	204.0
9/16-18	75	102.0	120	163.2	170	231.2
5/8-11	90	122.4	150	204.0	220	299.2
5/8-18	100	136	180	244.8	240	326.4
3/4-10	160	217.6	260	353.6	386	525.0
3/4-16	180	244.8	300	408.0	420	571.2
7/8-9	140	190.4	400	544.0	600	816.0
7/8-14	155	210.8	440	598.4	660	897.6
1-8	220	299.2	580	788.8	900	1,244.0
1-12	240	326.4	640	870.4	1,000	1,360.0

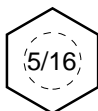
NOTES

- These torque values are to be used for all hardware excluding: locknuts, self-tapping screws, thread forming screws, sheet metal screws and socket head setscrews.
- Recommended seating torque values for locknuts:
 - for prevailing torque locknuts - use 65% of grade 5 torques.
 - for flange whizlock nuts and screws - use 135% of grade 5 torques.
- Unless otherwise noted on assembly drawings, all torque values must meet this specification.

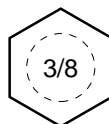
Wrench & Fastener Size Guide



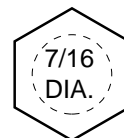
1/4" Bolt or Nut
Wrench—7/16"



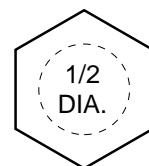
5/16" Bolt or Nut
Wrench—1/2"



3/8" Bolt or Nut
Wrench—9/16"



7/16" Bolt or Nut
Wrench (Bolt)—5/8"
Wrench (Nut)—11/16"



1/2" Bolt or Nut
Wrench—3/4"

